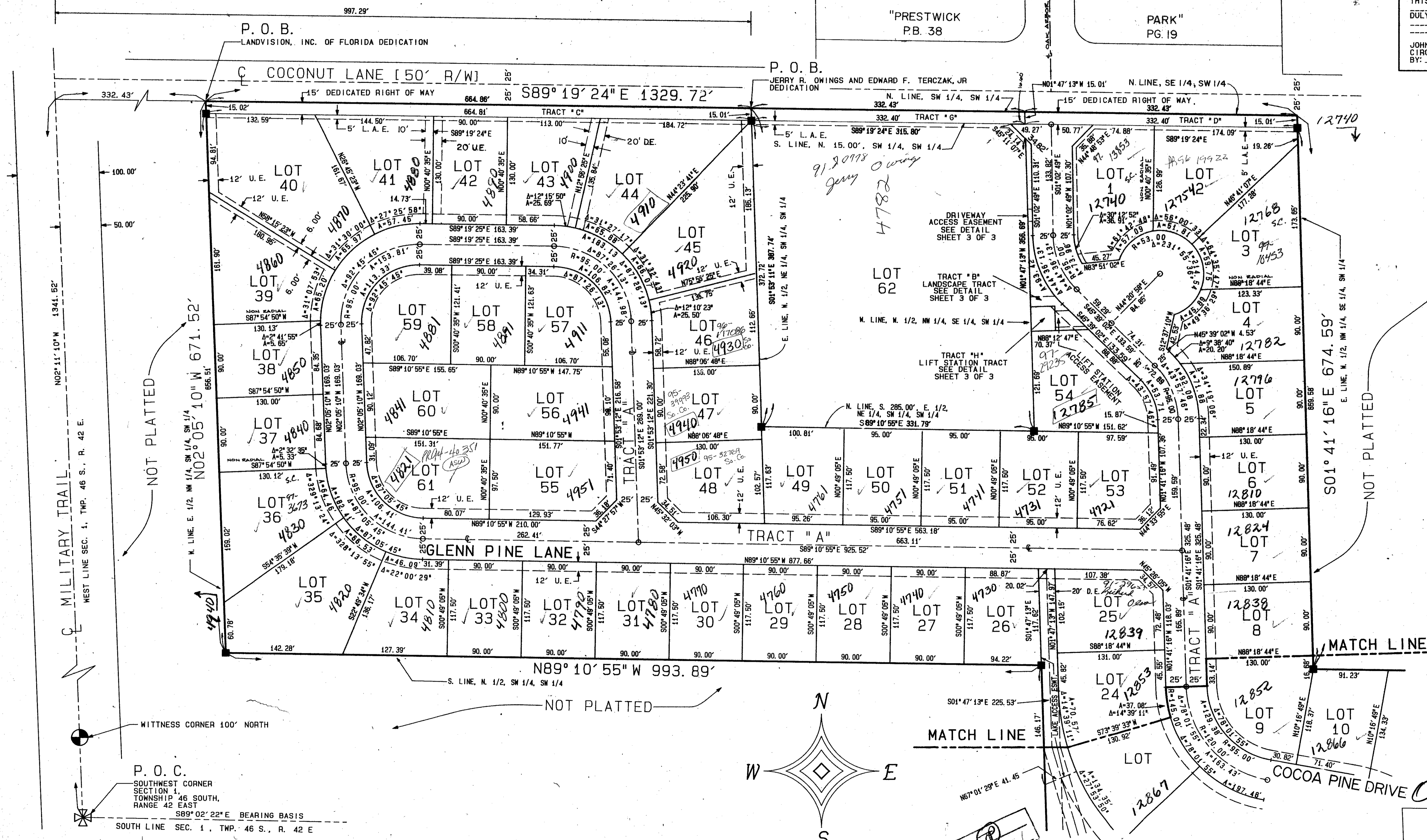


# COCOA PINE ESTATES

43

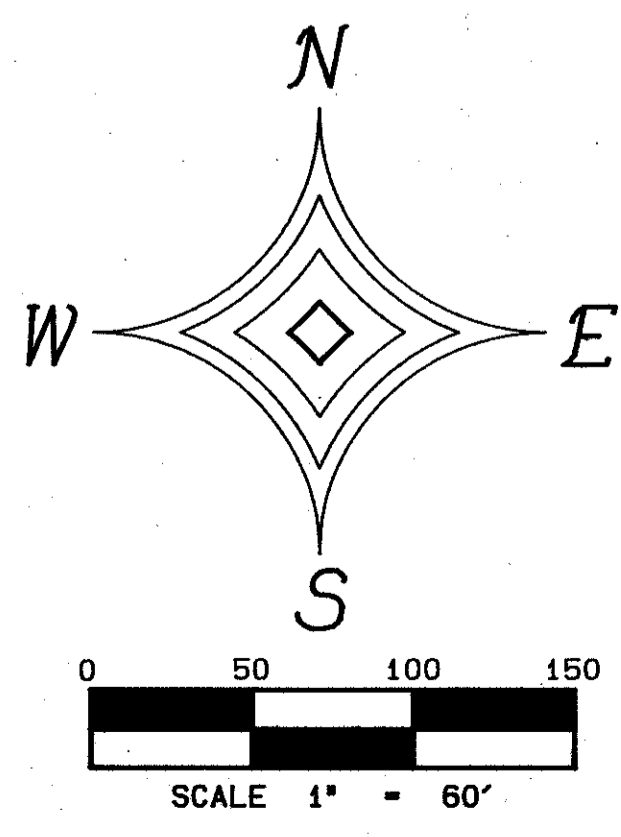
( A P. R. D. )  
 SITUATE IN SECTION 1, TOWNSHIP 46 SOUTH, RANGE 42 EAST  
 PALM BEACH COUNTY, FLORIDA.  
 JULY 1989 SHEET 2 OF 3

STATE OF FLORIDA  
 COUNTY OF PALM BEACH  
 THIS PLAT WAS FILED FOR  
 RECORD AT \_\_\_\_\_ DAY OF  
 THIS \_\_\_\_\_ AD. 1989 AND  
 DULY RECORDED IN PLAT BOOK  
 \_\_\_\_\_ ON PAGES \_\_\_\_\_ AND  
 \_\_\_\_\_  
 JOHN B. DUNKLE, CLERK  
 CIRCUIT COURT  
 BY: \_\_\_\_\_ DC



SUBDIVISION: Cocoa Pine Estates  
 BOOK: 64  
 FLOOD ZONE: B  
 FLOOD MAP # 200B  
 ZONING: RS  
 QUAD: 36  
 ZIP CODE: 33413  
 P.L.D. NAME: James R. Almond  
 140142 782542

THIS INSTRUMENT WAS PREPARED BY  
 JAMES R. ALMOND IN THE OFFICE OF  
 DONALD L. TODD, INC.  
 PROFESSIONAL LAND SURVEYORS  
 4425 BEACON CIRCLE, SUITE 102  
 WEST PALM BEACH, FLORIDA 33407



ADD. BY  
 CHECKED BY

"FOR MATCH"  
 SEE SHEET 3 OF 3

COCOA PINE ESTATES 64/45

KEY MAP SHEET 3 OF 5

MILITARY TRAIL  
 WEST LINE SEC. 1, TWP. 46 S., R. 42 E.

NOT PLATTED  
 N. LINE, E. 1/2, NW 1/4, SW 1/4, SW 1/4  
 N02°05'10" W 671.52'

NOT PLATTED  
 E. LINE, N. 1/2, NW 1/4, SE 1/4, SW 1/4  
 S01°41'16" E 674.59'

P. O. C.  
 SOUTHWEST CORNER  
 SECTION 1,  
 TOWNSHIP 46 SOUTH,  
 RANGE 42 EAST  
 S89°02'22"E BEARING BASIS  
 SOUTH LINE SEC. 1, TWP. 46 S., R. 42 E

WITNESS CORNER 100' NORTH

MILITARY TRAIL  
 WEST LINE SEC. 1, TWP. 46 S., R. 42 E.

NOT PLATTED  
 N. LINE, E. 1/2, NW 1/4, SW 1/4, SW 1/4  
 N02°05'10" W 671.52'

NOT PLATTED  
 E. LINE, N. 1/2, NW 1/4, SE 1/4, SW 1/4  
 S01°41'16" E 674.59'

P. O. C.  
 SOUTHWEST CORNER  
 SECTION 1,  
 TOWNSHIP 46 SOUTH,  
 RANGE 42 EAST  
 S89°02'22"E BEARING BASIS  
 SOUTH LINE SEC. 1, TWP. 46 S., R. 42 E

WITNESS CORNER 100' NORTH